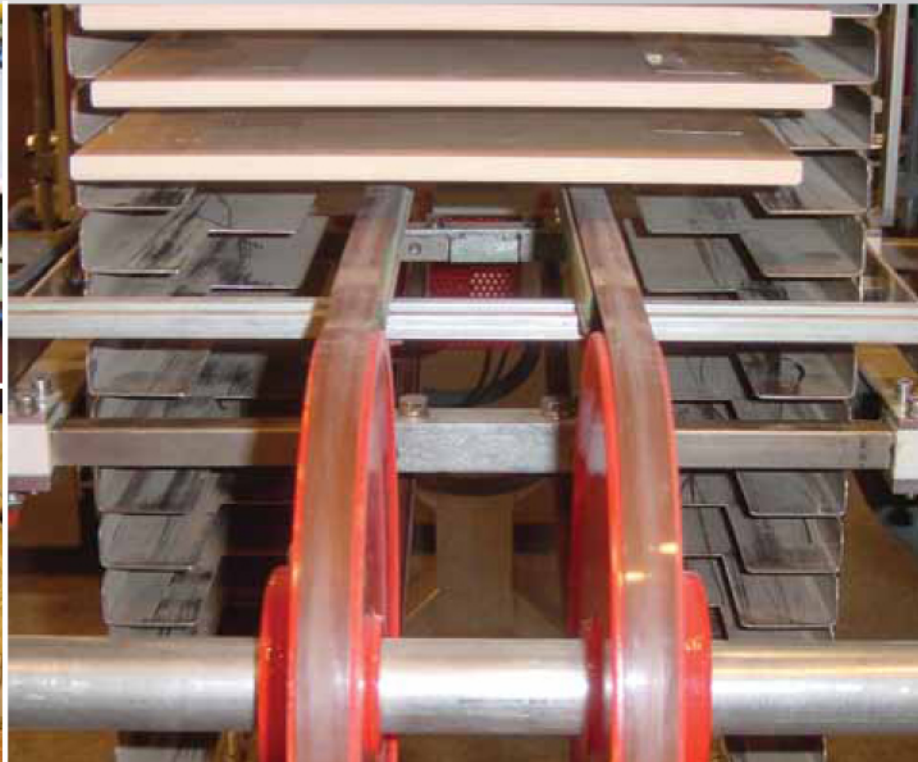
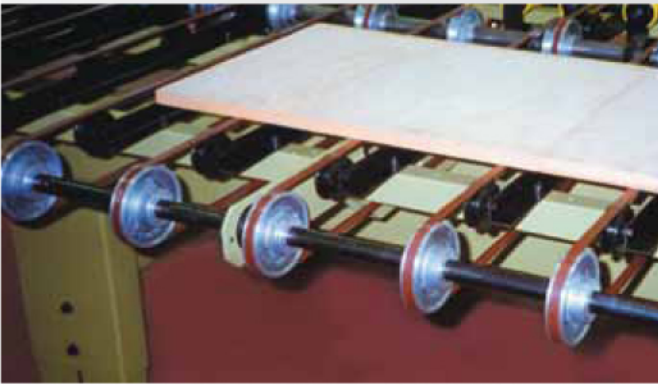




*Conveying Solutions*  
**Wood Industry**



*The Next Step in Belting*

**Wood processing machinery performs a range of unique and difficult applications. Volta Belting Technology has the product range, experience and technologies to provide solutions for these machine-based applications.**

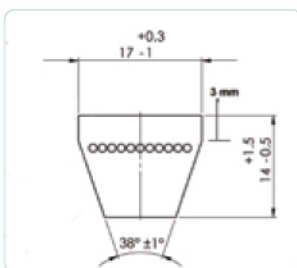
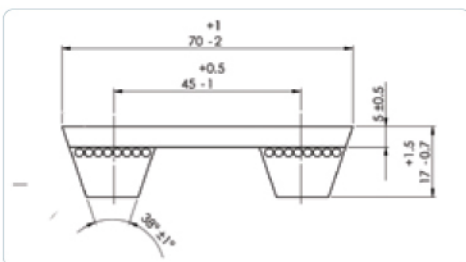
**The product range includes:**

- 1524mm wide flat belts for cutting, gluing and transporting wood chips and sawdust.
- White Volta Power® Transmission belts for applications requiring high grip and non-marking characteristics.
- Belt coatings for flat wide belts, profiles and timing belts.
- Belts for specific use machines such as edge banders.
- Roller coating sleeves.

**Volta Power® in the Wood Industry**

The Volta Power® product line includes belts specially designed for wood processing machinery produced from white colored Thermoplastic Rubber (TPR) that combines the performance properties of Thermo set rubber with the capabilities of the Thermoplastics' processing equipment. TPR gives a better quality final product with superior dimensional accuracy.

Our unique computerized production system enables us to manufacture power transmission belts in any length up to 70 meters, standard or non-standard with no minimum quantities and to ship within days.



➔ **Typical (machine) applications**

Double-end tenoners and edge banders are designed for high-speed processing of panel shaped work pieces such as :

- direct coated panels
- core board
- plywood
- hard foam
- post forming or cement-bonded fiber
- MDF
- solid wood
- plastics
- cork

This work requires a belt that will firmly grip any material used without marking the final product.

➔ **Typical machines:**

- HOMAG
- STEFANI
- BIESSE
- IDM
- IMA
- CELASCHI
- HOLZ-HER
- NARDELLO





# Volta Power® for the Wood Industry Products



## Classical Power Belt with Smooth Top

Sections	A	B	20	C	25	D
Width (~)	13	17	20	22	25	32
Height (~)	11	14	15	17	19	23
Min. Pulley (mm)*	80	140	180	200	280	400



## Classical Power Belt with Waffle Top

Sections	A	B	20	C	25	D
Width (~)	13	17	20	22	25	32
Height (~)	11	14	15	17	19	23
Min. Pulley (mm)*	80	140	180	200	280	400



## Classical Power Belt with Roof Top

Sections	D/32
Width (~)	32
Height (~)	23
Min. Pulley (mm)*	400



## Banded Belt with Waffle & Smooth Top

Volta Power® produces a line of special white banded belts. The belts are available with smooth, soft top (PKR0) or with waffle top (PKR2). These belts are designed to be used on processing machinery requiring a belt that is non-marking and has high grip. In addition, the belt provides excellent strength and carrying capacity.

**The benefits of the banded belts are:**

- eliminates belt twisting and reduces whipping
- ensures even belt tension
- increased transmission efficiency
- reduced maintenance cost

## Special Wood Products:



## Special Dimension Belts with Waffle Top

Sections		
Dimensions	48x15	50x20
Min. Pulley (mm)*	140	200



## Special Banded Belt

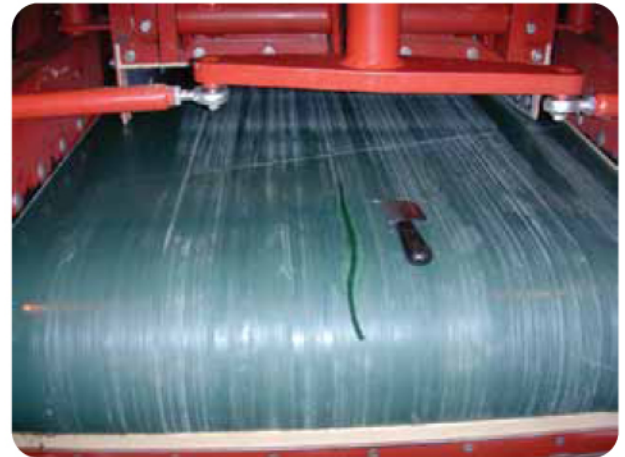
Dimensions	62x18	67x17	70x17	75x17
Min. Pulley (mm)*	200	200	200	200

*Classical, narrow, banded and conveyor belts are also available in white.*

# Industrial Grade Flat Belts in the Wood Industry

The Volta General Conveyor Belting line is manufactured from Thermoplastic Elastomer (TPE) material with unique homogeneous characteristics. These belts are most suitable for conveying wood and are available in a wide range of colors, thicknesses, hardnesses and surface textures. Quality thermo-welded fabrications are custom-made to suit your specific needs perfectly.

Standard Belt Width = 1524mm /60"



- High carrying capacity with excellent grip.
- Soft, non-marking belt treats the product conveyed with extreme care.
- Absorbs the impact of falling products well to ensure a long belt life.
- Resistant to moisture, chemicals, paints and glue –prevents paint and glues from adhering to the surface making them easy to clean.
- The belt materials flexible character is highly resistant to abrasion and inhibits surface cuts from spreading.
- Homogeneous smooth surface does not crumble or crack (as seen in rubber belting).
- Reinforced bottom belts used to prevent elongation on very long conveyors.
- Quick and easy to repair and endless making with Volta thermo welding tools.

## Recommended applications:

BELT TYPE	Color	Shore Hardness	Thickness mm	Industry	Application	Reinforced	Non-Marking	Grip	Resists Paints & Glues	Quick Splice & Repair	Resistant to Abrasion
FRL	Brown	80A	2	Wood Flooring	Dimpter of Graycon Sorters	✓	✓	high	✓	✓	✓
				Wood Flooring							
			3	Melamine Cabinet Manufacture	Transfers Dimpter Sorters						
			5	Plywood	Skinner Saws, Trim Saws, Jumper Belts, Inclines						
FRGZ	Dark Green	80A/46D	3	Wood Flooring	Dimpter of Graycon Sorters	✓	✓	medium	✓	✓	✓
				Plywood	Putty Lines						
				Cabinet Manufacture	Dimpter Sorters						
			4	Plywood	Veneer Stackers, Jumper Belts, Putty Lines						
FRG	Grey	95A/46D	2	Plywood	Set of Narrow Spaced Belts	✓	✓	medium	✓	✓	✓
			3		Alignment Belt						
FK	Light Green	59D	3	Saw Mill	Cut Board Transfer Belts	✗	✓	low	✓	✓	✓
			4	Raw Timber	Feeding Belt						
FRPZ	Dark Green	86A	3	Floor Lamination	Feeding Belt	✓	✓	high	✓	✓	✓

## Roller Coating Sleeves

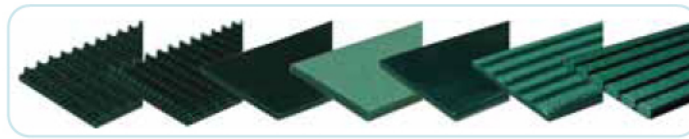


Volta Sleeves have an abrasion resistant, soft, non-marking surface that is ideal for coating rollers. Using VOLTA proprietary tools, the sleeves are easily mounted with no lubrications or glues. Sleeves are available with a smooth surface and in dimensions from 12 mm O.D. to 95 mm O.D.



## Belt coatings

A wide range of heat-welded coatings can be applied to achieve extra grip and added protection against forceful impact of falling wood.



## Volta products in the Wood industry

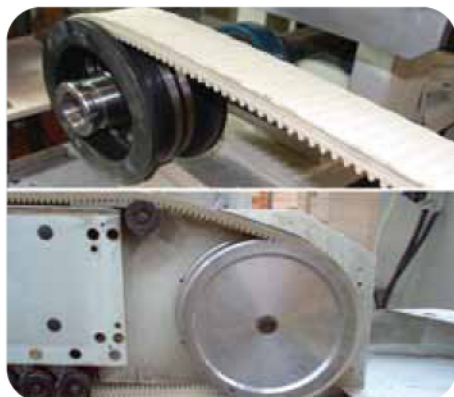
Products type	Non- marking	Resistant to abrasion	Resistant to paints and glue	High grip	Dimensional stability	Hard material	Soft material	Surface texture
PU V belts	●	●	●	●	●	●	●	
PU Round belts	●	●	●	●	●	●	●	
A * section	●	●	●	●	●		●	
B * section	●	●	●	●	●		●	
C * section	●	●	●	●	●		●	
D * section	●	●	●	●	●		●	
48x15	●	●	●	●	●		●	
50x20	●	●	●	●	●		●	
SP-2x20 (67x17) *	●	●	●	●	●		●	
SP-2C (70x17) *	●	●	●	●	●		●	
PU Waffle	●	●	●	●	●		●	●
FSTF	●			●	●		●	
FST	●		●	●	●		●	
FSTF-ST strips	●			●	●		●	●
Machine tapes (SM)	●		●	●	●		●	
Sleeves, Standard	●	●	●	●	●		●	
Sleeves, ribbed	●	●	●	●	●		●	●

\* Available with a standard smooth top PKR0 and waffle top PKR2 patterns.



## ➔ Edge Bander

Belt Section: SP - 2C  
Quantity In Machine: 1



## ➔ Postforming

Belt Section: SP - 2C  
Quantity In Machine: 1



## ➔ Wood Processing

Belt Section: SP - 2C  
Quantity In Machine: 1



## ➔ Tenoners

Belt Section: D - PKR0  
Quantity In Machine: 2



## ➔ Tenoners

Belt Section: D - PKR0  
Quantity In Machine: 2



## ➔ Edge Bander

Belt Section: 48x15  
Quantity In Machine: 1



### Corporate Headquarters

Sales and Manufacturing  
sales@voltabelting.com

### USA

Tel: +1 973 276 7905  
Fax: +1 973 276 7908  
Toll Free: 1-877-VOLTAUS

### EUROPE

Tel: +31-546-580166  
Fax: +31-546-579508

[www.voltabelting.com](http://www.voltabelting.com)

Volta Belting makes no warranty with respect to any of its products for a particular purpose.  
See **Volta** General Terms and Conditions.

Copyright©2010 Volta Belting Technology Ltd.  
9CAT003EN00- Ver. A - December 2012